

# Type Inference Extras

CSCI 334  
Stephen Freund

1

1

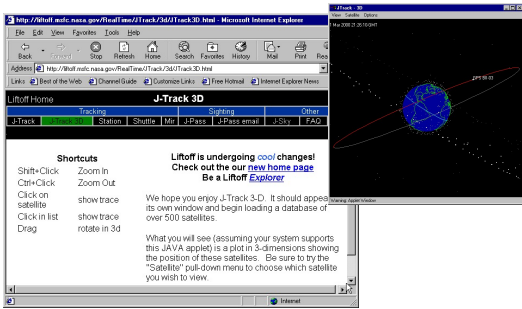
# Type Inference Applications

- Compilers
  - are values used consistently with some type?
- C++ template expansion
  - must we generate a new template version?
- JVM Safety Checking
- Race condition analysis

2

2

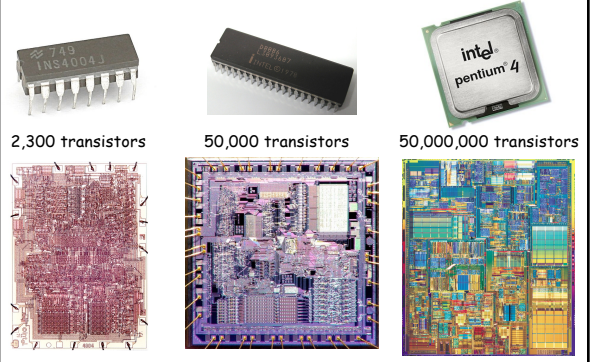
# Programs on the Web



3

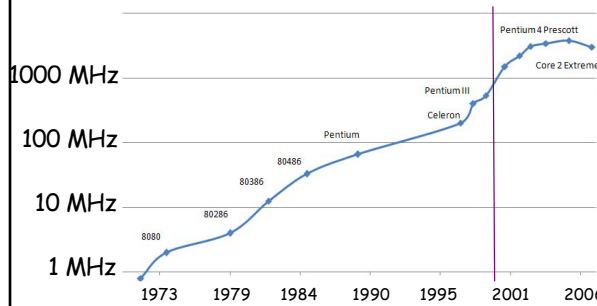
3

# Intel 4004 (1971) Intel 8086 (1978) Intel Pentium 4 (2000)

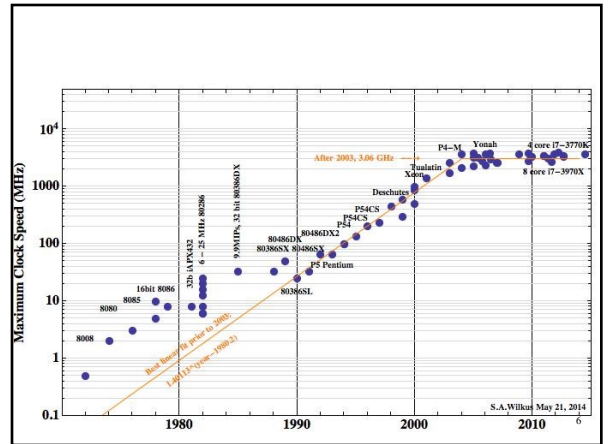


4

# Processor Clock Speeds

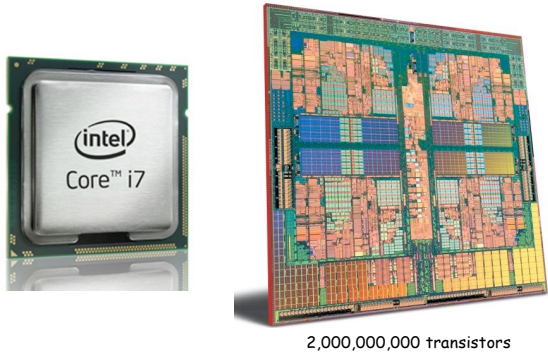


5



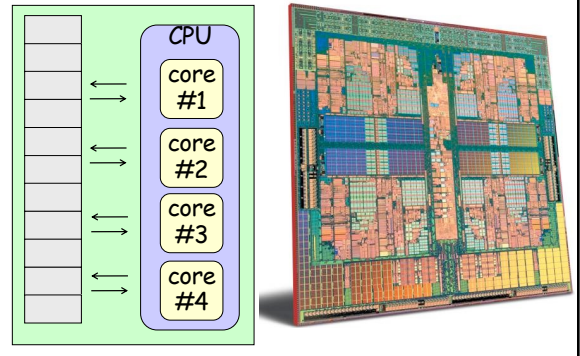
6

### Intel Core i7 (2010)



7

### Multi-Core Chips



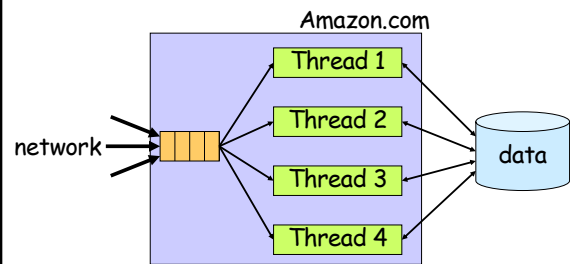
8

### Concurrent Programming With Threads

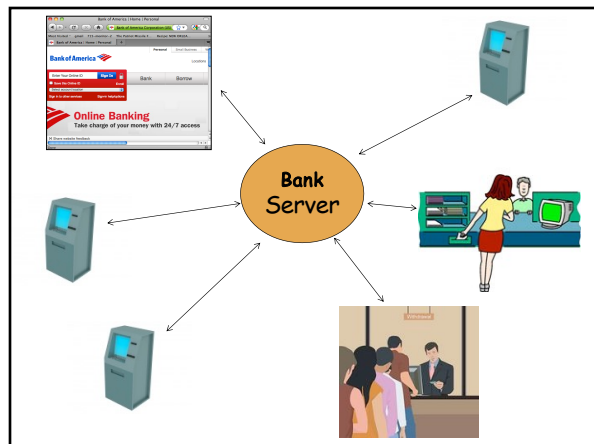


9

### Concurrent Programming With Threads

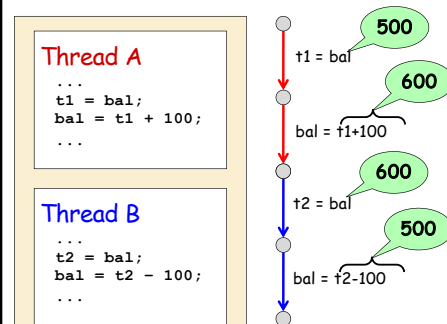


10

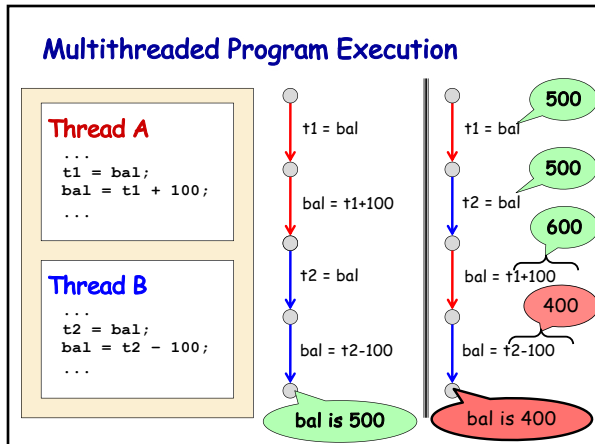


11

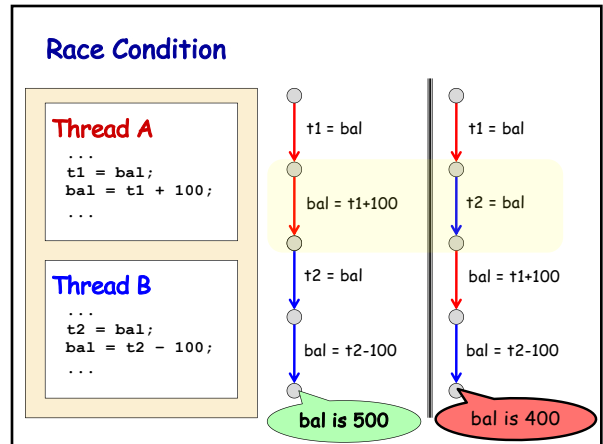
### Multithreaded Program Execution



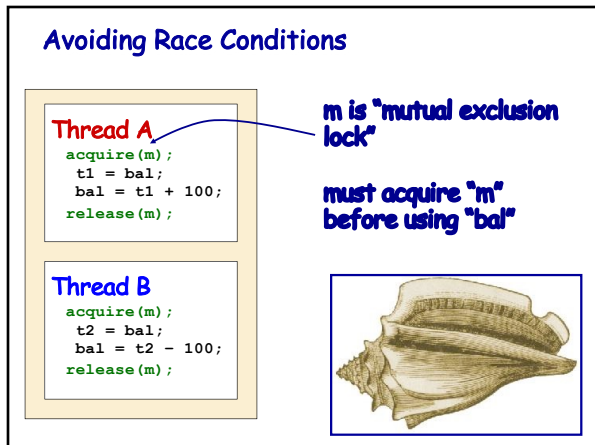
12



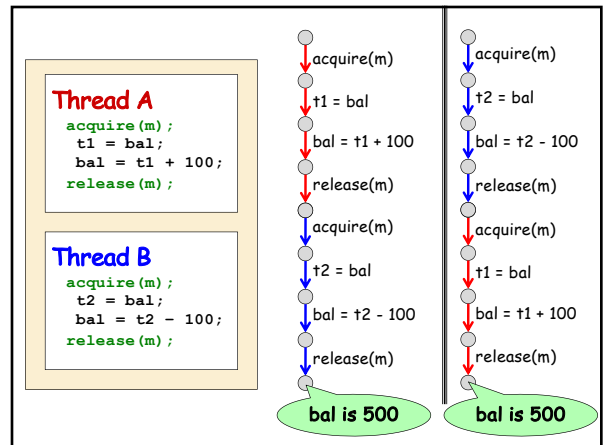
13



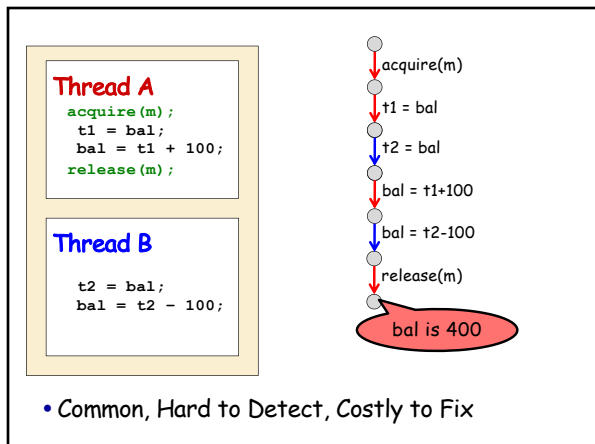
14



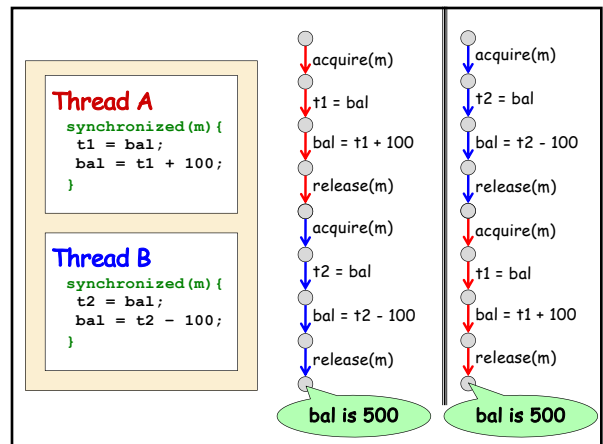
15



16



17



18

## Type Inference to Identify Races

Thread 1

```
synchronized(1) {  
  {1} x := 10;  
}  
synchronized(m) {  
  synchronized(1) {  
    {1,m} x := !y + 1;  
  }  
  y := 2;  
} {m}
```

Thread 2

```
synchronized(m) {  
  print !y; {m}  
}  
synchronized(m) {  
  print !x; {m}  
}
```

19

19